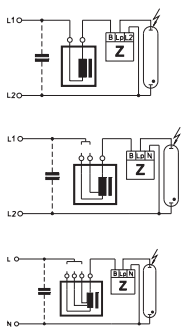


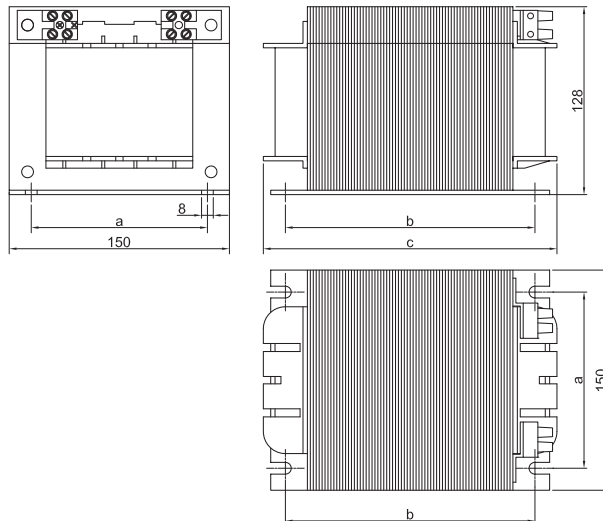
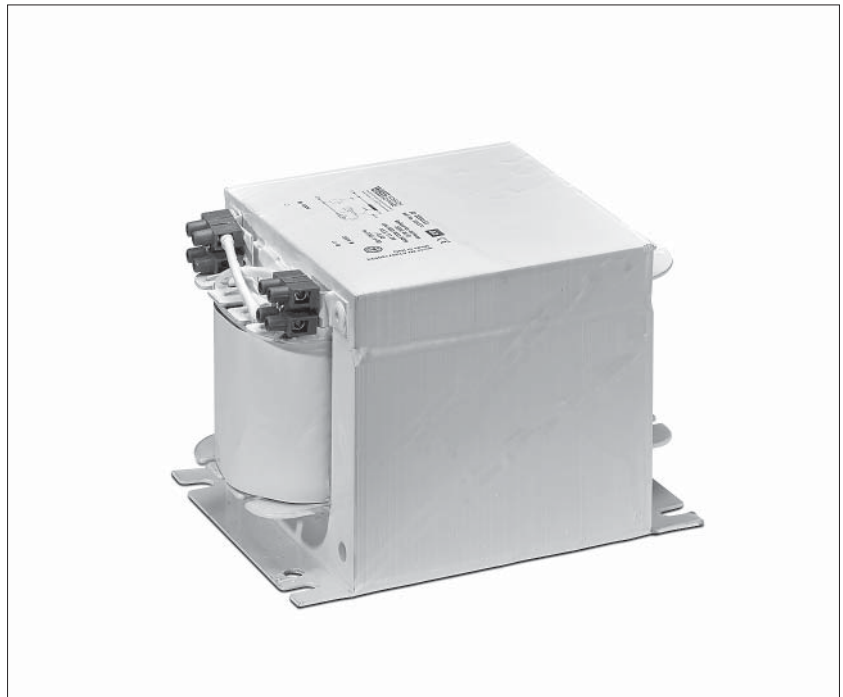
Ballasts for HI Lamps up to 2500 W

Shape: 150x150 mm

For metal halide lamps (HI)
 Vacuum impregnated with polyester resin
 Screw terminals: 0.75–4 mm²
 For luminaires of protection class I
 tw 130



For Short Arc Lamps



Lamp			Ballast										Capacitor	
Output W	Type	Current A	Type	Ref. No.	Voltage AC V, Hz	a mm	b mm	c mm	Weight kg	Δt K	Power factor λ	Energy efficiency	C _P μF	I _N A
2000	HI	8.8	J 2000.71	554303	380/400, 50	122	175	200	15	75	0.60	A2	37	6
			J 2000.72	554304	380/400/415, 50	122	135	160	14	70	0.58	A2	37	6
			J 2000.73	554305	380, 60	122	175	200	15	75	0.53	A2	30	6
2000	HI	10.3/11.3	JD 2000.81	554270	380/400, 50	122	175	200	15	80	0.53	A2	60	6
			JD 2000.81	554306	380/400/415, 50	122	135	160	14	75	0.52	A2	60	6
			JD 2000.83	554283	380, 60	122	175	200	15	75	0.54	A2	50	6
2000	HI	12.2	JD 2000III.91	554307	380/400, 50	122	175	200	16	80	0.46	A2	70	6
			JD 2000III.92	554308	380, 60	122	175	200	16	75	0.45	A2	60	6
2000	HI	16.5	JD 2000I.85	554309	230/240, 50	122	135	160	14	80	0.57	A2	125	10.5
			JD 2000I.86	554310	220, 60	122	135	160	14	80	0.57	A2	105	10
For Short Arc Lamps 1200 and 2500 W														
1200	HI	13.8	J 1200.95	554311	208, 60	122	105	130	11	-	0.40	A2	150	6
					230/245, 50									
2500	HI	25.6	J 2500.96	554312	208, 60	122	175	200	16	-	0.44	A2	260	12.3
					230/245, 50									