

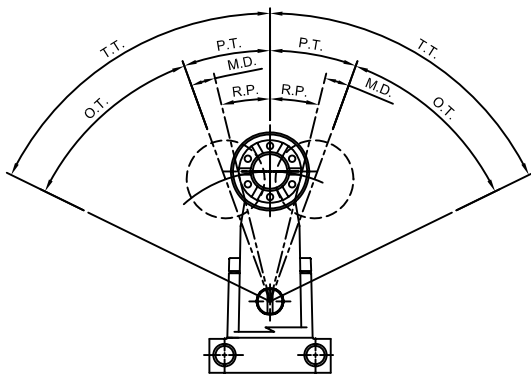
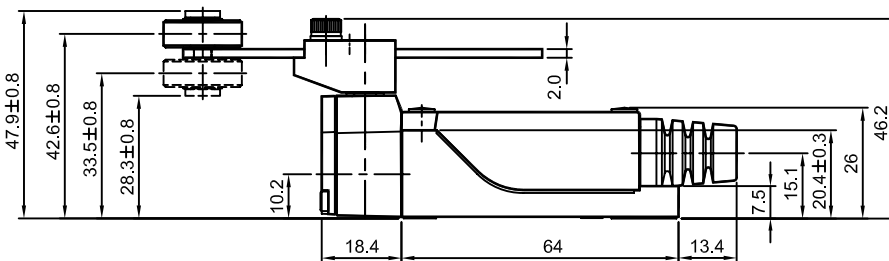
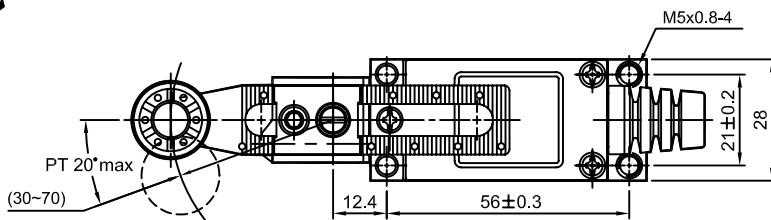
1

2

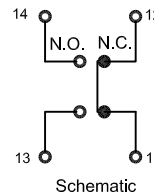
3

4

| Rev | Description | ECN No. | Approved | Date |
|-----|-------------|---------|----------|------|
| | | | | |



O.F.: Operating Force
 R.F.: Release Force
 P.T.: Pre-Travel
 M.D.: Movement Differential
 O.T.: Over Travel
 T.T.: Total Travel



| O.F. N(gf) max. | R.F. N(gf) min. | P.T. max. | M.D. max. | O.T. min | T.T. min |
|---------------------|--------------------|--------------|--------------|-------------|-------------|
| 3.35(342)~7.84(800) | 0.21(21)~0.49(50) | 20° | 10° | 75° | 95° |

* 1,000gf=9.8N

Specification:

- Contact type: 1a1b.
- Contact resistance(Initial): 20MΩ max.
- Insulating resistance(Initial): 100MΩ @500VDC min.
- Dielectric strength:
 - between non-continuous terminals: 1,000V/1minute, 50/60Hz
 - between current-carrying metal parts and ground, and non-current-carrying parts: 2,000V/1 minute, 50/60Hz
- Vibration resistance: 55Hz @1.5mm double amplitude.
- Shock resistance(Malfunction): 98m/s (10G) max.
(Destruction): 294m/s (30G) max.
- Ambient temperature:-20° C to 60° C@RH 90% (20° C)max.
- Life expectance: Mechanical-10,000,000 operations min.(120 cpm)
Electrical - 300,000 operations min
- Operation frequency: 120 cpm max.
- Enclosure protection: IP 64 (IEC 529)
- Rating: 5 Amps @250/125Vac, 0.4Amps @125Vdc.

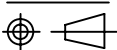
Note: The tolerance should be ±0.4mm unless otherwise specified.



SOLON[®]

This document is the property of SOLON. Its use is authorized only for responding to a request for quotation or for the performance of work for SOLON. All questions must be referred to the SOLON Engineering dept.

Third Angle Projection



SI

DO NOT SCALE THIS DRAWING

UNLESS OTHERWISE SPECIFIED DIMENSIONS ARE IN MILLIMETERS

| | | | | | | |
|------------|--------------|----------|----------|---------|------|---|
| PART NAME | Limit Switch | | PART NO. | VL-8108 | | |
| DRAWING BY | Anny Huang | 10/02/02 | SCALE | 1 / 1 | SIZE | A |
| APPRD BY | Rich Yang | 10/12/02 | SHEET | 1 OF 1 | REV. | 0 |
| | SPEC NO. | CODE NO. | DWG. NO. | | | |
| | SP-0015-00 | VL-003 | VL-8108 | | | |

1

2

3

4