

## Pressure switch BC-DSPC / BC-DSHC

## Pressure switch BC-DSPB / BC-DSHB

Pressure switch in hydraulic or pneumatic design for mining and chemistry

### Description

The BC-DS pressure switch converts pneumatic or hydraulic signals to electrical signals. The switching point is set at a stepless knob. (For pressure setting range, see specifications).

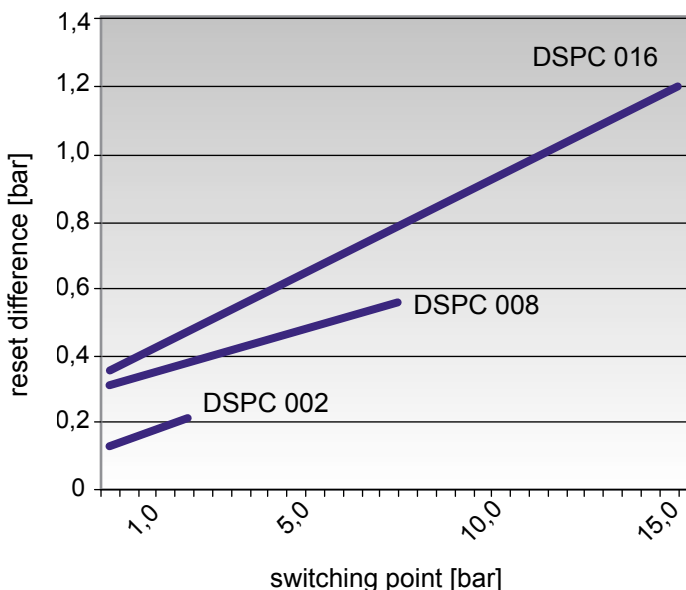
The product features high functionality, compact design and robustness.

- The switching point is factory-set to the middle of the pressure setting range  $\pm 0,5$  bar:
- The product is free of paint-wetting substances.

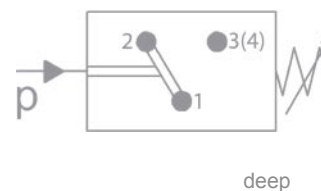


### Specifications

<p><b>Operating fluid:</b> Compressed air, filtered to 10 <math>\mu</math>m, oiled or oil-free, water, hydraulic fluids</p> <p><b>Mechanical mounting.:</b> 2 through holes in housing, <math>\varnothing</math> 5.2 mm diameter</p> <p><b>Fluid-mounting:</b> G1/4, NPT1/4" or flange</p> <p><b>Installation pos.:</b> Any</p> <p><b>Pressure setting range:</b> -0.85...1 bar 0.2...2 bar 0.5...8 bar 1...16 bar 20 bar</p> <p><b>Repeat accuracy:</b> <math>\pm 2</math> % of range end value</p> <p><b>Max. operat. cycles:</b> 200/min.</p> <p><b>Temperature range:</b> -10°C to +60°C</p> <p><b>Vibration withstand:</b> 10 g (10...2000 Hz)</p> <p><b>Shockproof:</b> 30 g</p>	<p><b>Electrical connection:</b> Appliance plug, shape A DIN EN 175301-803, ISO 4400</p> <p><b>Switching element:</b> Reversing switch with catch spring as contact element with self-cleaning contacts</p> <p><b>Material:</b> Housing: zinc diecasting Seal/diaphragm: NBR</p> <p><b>Weight:</b> 0,300 kg</p> <p><b>Mining:</b> <math>\text{Ex I M2 Ex ia I Mb}</math></p> <p><b>Chemistry:</b> <math>\text{Ex II 2G Ex ia IIC T6 Gb}</math></p> <p><b>Certificate:</b> BVS 03 ATEX E 165</p>
<p><b>Mining:</b> <math>\text{Ex ia I Mb}</math></p> <p><b>Chemistry:</b> <math>\text{Ex ia IIC T6 Gb}</math></p> <p><b>Certificate:</b> IECEx BVS 11.0056</p>	



### Switching function:



**Pneumatic connections DIN 43650 zinc diecasting**

