

WARNER LEWIS

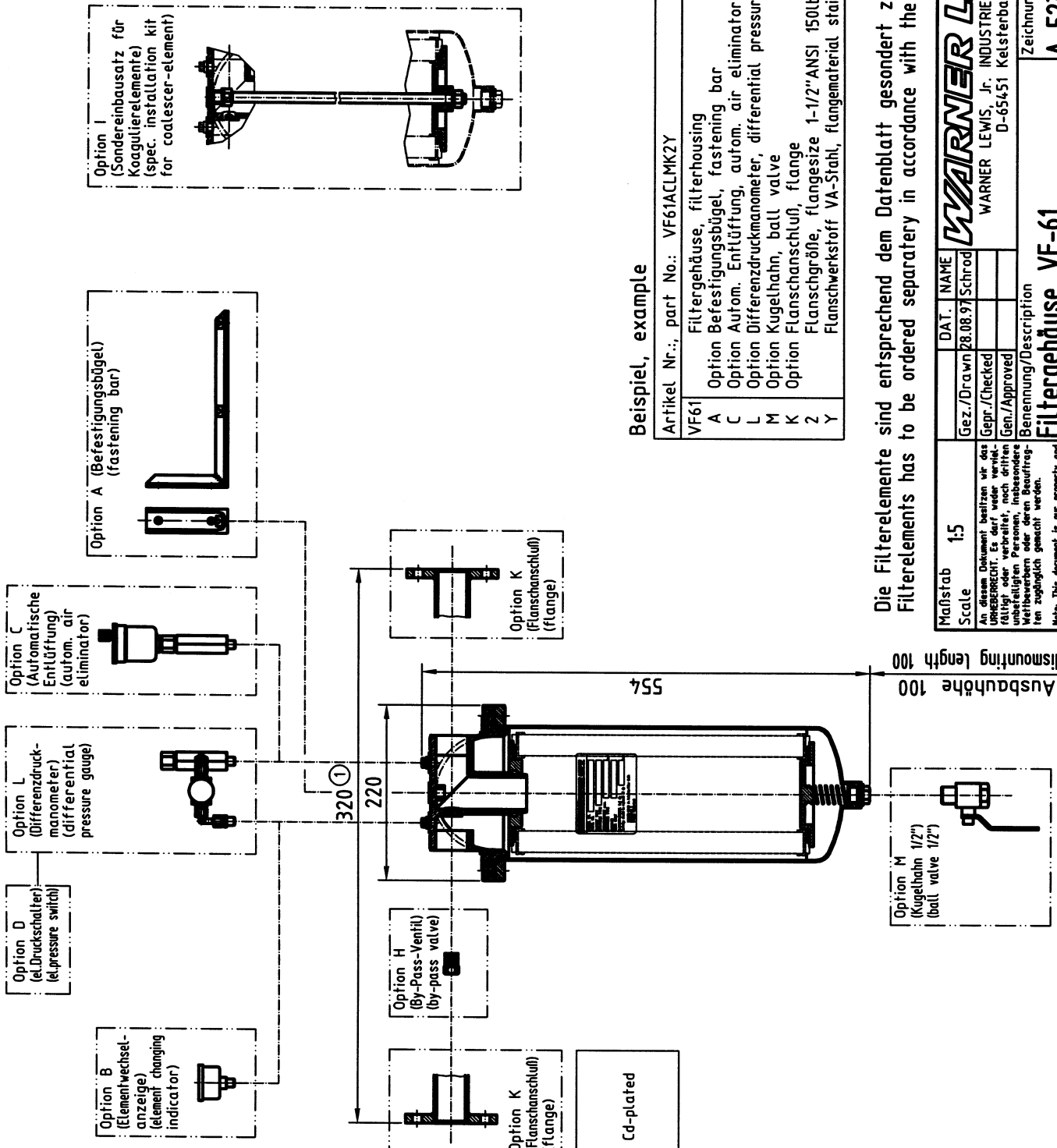
VF610402E

Data Sheet

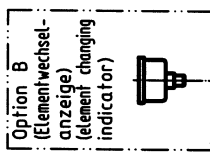
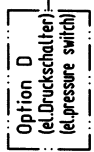
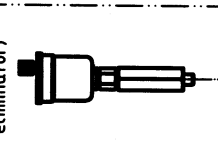
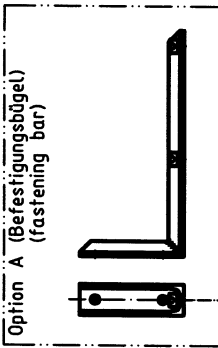
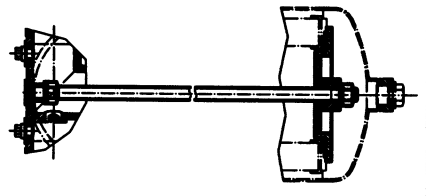
Filter Housing VF-61

Model	:		
Main Dimensions	:		see page 2
Weight (empty, without elements)	:		ca. 6,5 kg
Material	:	Housing Head Head Gasket	Stainless steel Aluminium O-Ring, NBR70
Max. Allow. Operating Pressure	:		10 bar
Max. Test Pressure	:		13 bar
Allow. Working Temperature	:		50°C
Connections	:	Inlet/ Outlet Drain Vent and Delta p Gauge	G 1 ¼ G ½ G ⅛
VELCON – Elements (Performance of Elements depends on the viscosity of media. Max. flow rate for FO- and AC- Elements approx. 200 l/min. For ACO- Elements 211 l/min.)	:	Pleated Paper Elements: from ½ up to 75 µ Micron Ratings	FO-614PLF
		AQUACON Elements (water absorbent): Jet Fuel acc. API/IP 1583 Specification Avgas sim. API/IP 1583 Specification Gasoline / Petrol Diesel and Hydraulic Oil	ACO-61401K ACO-61401K AC-61405 AD-61425
		Coalescer Element on enquiry	
Accessories	:	Option A Option B Option C Option D Option H Option I Option K Option L Option M	Fastening Bar Element Changing Indicator Automatic Air Eliminator Electrical Pressure Switch By-Pass Valve Installation Kit Coalescer Element 4” Inlet / Outlet Flange Differential Pressure Gauge Ball Valve (Drain)

The Standard version has a closed by-pass opening (Aviation Version). If the Filter Housing is operated according to API/IP 1583 a Differential Pressure Gauge (Option L) has to be installed. Additional accessories on enquiry after technical approval.



Option I
(Sondereinbausatz für
Koagulier-elemente)
(spec. installation kit
for coalescer-element)



Flanschgröße für Option K
flangesize for option K

1	-	DN65	PN16
2	-	1-1/2"	ANSI 150lb RF
3	-	DN65	TW
4	-	2"	ANSI 150lb RF
5	-	DN25	PN16
6	-	DN50	TW
7	-	DN80	TW

Flanschwerkstoff für Option K
flangematerial for option K

BC - C-Stahl cad.+gelb chrom., C.S. Cd-plated
Y - VA-Stahl, stainless steel
P - Aluminium, aluminium

Beispiel, example

Artikel Nr.: part No.: VF61ACLMK2Y

VF61	Filtergehäuse, filterhousing
A	Option Befestigungsbügel, fastening bar
C	Option Autom. Entlüftung, autom. air eliminator
L	Option Differenzdruckmanometer, differential pressure gauge
M	Option Kugelhahn, ball valve
K	Option Flanschanschluss, flange
Z	Flanschgröße, flangesize 1-1/2"ANSI 150lb RF
Y	Flanschwerkstoff VA-Stahl, flangematerial staimless steel

Die Filterelemente sind entsprechend dem Datenblatt gesondert zu bestellen
Filterelements has to be ordered separately in accordance with the data sheet

Maßstab 1:5	Gez./Drawn 28.08.97	NAME Schrod	DAT.
An diesem Dokument besitzen wir das URRECHT. Es darf weder vervielfältigt oder verbreitet, noch dürfen die darin enthaltenen Informationen weitergegeben werden, ohne die schriftliche Genehmigung der Warnner Lewis Filter GmbH.		Gepr./Checked	
Note: This document is our property and shall not be reproduced or distributed by written permission of our company.		Gen./Approved	
Benennung/Description Filtergehäuse VF-61			
filterhousing VF-61			
Ursprung 5232-00/3		Ersatz für	
Zeichnung-Nr./Drawing-No. A-5232/3		Revision 1	
FILE		5232A00	