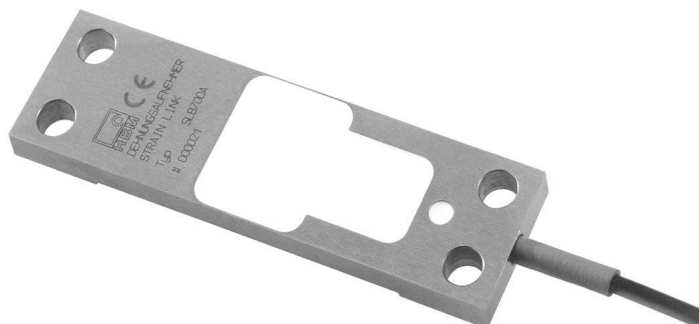


SLB-700A

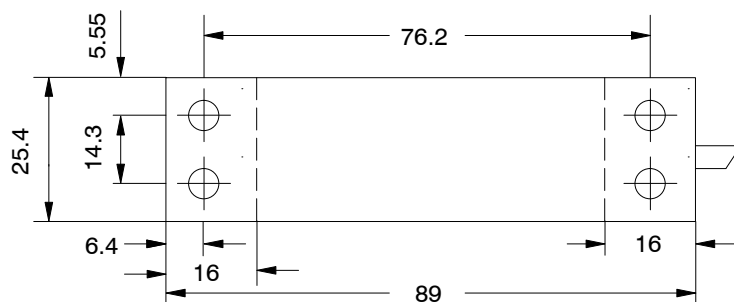
Strain Transducer



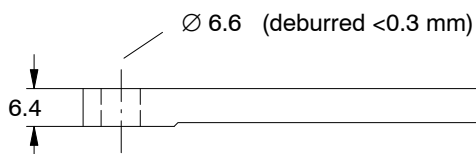
Special features

- For monitoring strain in statically and dynamically loaded units such as cranes, presses and roll stands
- Simply bolted into place
- Stainless steel
- Protected from harmful environmental effects

Dimensions (in mm; 1 mm= 0.03937 inches)



Four-wire cable
6 m long
Ø approx. 3 mm



Wiring assignment SLB-700A

Assignment	Wire colour
Excitation voltage (+)	blue
Excitation voltage (-)	black
Measurement signal (+)	white
Measurement signal (-)	red
Shielding	connected to enclosure

Specifications

Type		SLB-700A
Nominal strain	μm/m	500
Nominal sensitivity	mV/V	1.5 ± 0.15
Restoring force	N	approx. 3110
Zero point deviation	%	5
Temperature effect on the sensitivity, per 10 K	%	0.2
Temperature effect on the zero point, per 10 K	%	0.5
Compensated temperature range	°C	-10...+40
Input resistance	Ω	> 1000
Output resistance	Ω	1000 +10
Isolation resistance	GΩ	5
Nominal range of the excitation voltage	V	2...15
Max. operating strain	%	150
Breaking strain	%	300
Nominal displacement	mm	approx. 0.038
Cable length	m	6
Cable diameter	mm	approx. 3
Weight (complete with 6 m cable)	kg	0.16
Degree of protection acc. to EN 60 529		IP65

Ordernumber	1-SLB700A/06-1
-------------	----------------

Modifications reserved.

All details describe our products in general form only. They are not to be understood as express warranty and do not constitute any liability whatsoever.

B0165-2.4 en

Hottinger Baldwin Messtechnik GmbH

Im Tiefen See 45, D-64293 Darmstadt, Germany
 Tel.: +49 6151 803-0 Fax: +49 6151 803 9100
 Email: support@hbm.com Internet: www.hbm.com



measurement with confidence